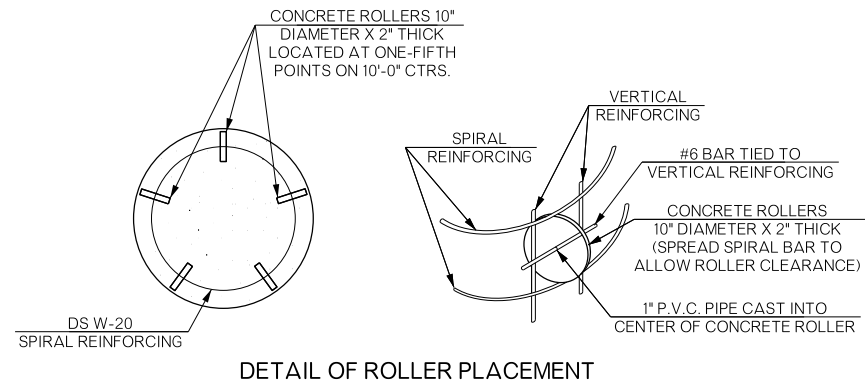
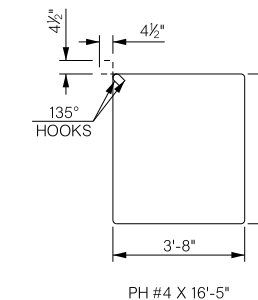
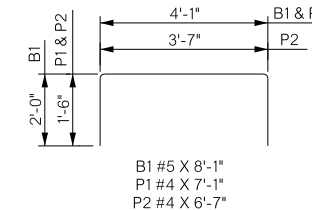
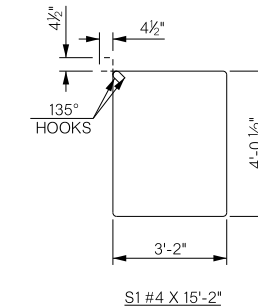
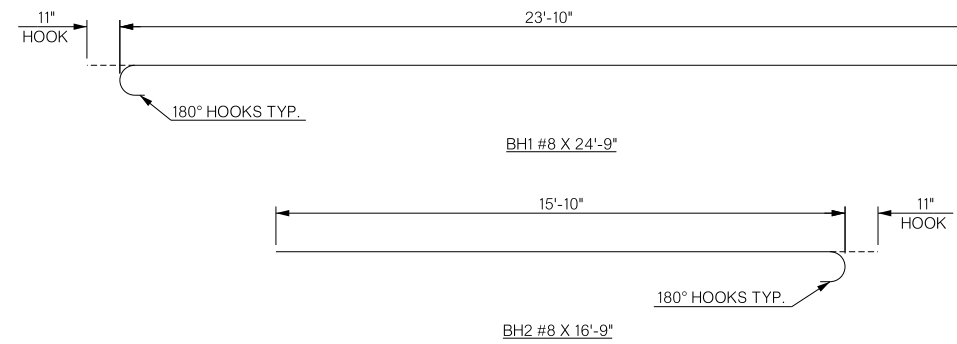


REVISIONS		
REV. NO.	DESCRIPTION	DATE

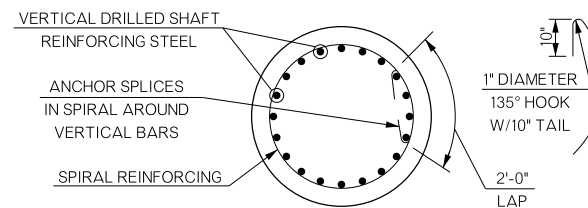


**DETAIL OF ROLLER PLACEMENT**



**NOTES:**

- ALL EDGES OF PIER CAP SHALL HAVE 1/2" CHAMFER EXCEPT FOR PEDESTAL EDGES WHICH SHALL HAVE A 3/4" CHAMFER.
- ALL BAR BEND DIMENSIONS ARE OUT TO OUT.
- CONSTRUCTION KEYS BETWEEN PIER CAP AND DRILLED SHAFT SHALL BE FORMED DOWNWARD.
- ALL CLEARANCES AT 2" UNLESS SPECIFIED OTHERWISE.
- CONCRETE USED IN THE ROLLERS SHALL HAVE A MINIMUM 28 DAY COMPRESSIVE STRENGTH OF 4000 PSI. SLAB BOLSTERS, HIGH CHAIRS, AND PLASTIC ROLLERS SHALL NOT BE SUBSTITUTED FOR THE CONCRETE ROLLERS.
- SPIRAL BARS SHALL CONFORM TO AASHTO M32.



**SPIRAL REINFORCING SPLICE DETAIL**

BAR LIST - PIER NO. 1 (PHASE I)				
MARK	SIZE	NO.	FORM	LENGTH
EPOXY COATED				
B1	#5	5	BNT.	8'-1"
BH1	#8	9	BNT.	24'-9"
BH3	#8	9	STR.	23'-10"
BH5	#5	10	STR.	23'-10"
P1	#4	15	BNT.	7'-1"
P2	#4	18	BNT.	6'-7"
PH	#4	1	BNT.	16'-5"
S1	#4	64	BNT.	15'-2"
② TWO DRILLED SHAFTS				
EPOXY COATED				
CV1	#9	40	STR.	47'-9"
NON-EPOXY COATED				
DS1	W20	2	SPIRAL	854'-7"

- ① MECHANICALLY SPLICED
- ② COST OF REINFORCING WILL BE INCLUDED IN UNIT PRICE OF DRILLED SHAFT
- ③ INCLUDES ONE 3'-8" LAP

BAR LIST - PIER NO. 1 (PHASE II)				
MARK	SIZE	NO.	FORM	LENGTH
EPOXY COATED				
B1	#5	5	BNT.	8'-1"
BH2	#8	9	BNT.	16'-9"
BH4	#8	9	STR.	15'-10"
BH6	#5	10	STR.	15'-10"
P1	#4	10	BNT.	7'-1"
P2	#4	12	BNT.	6'-7"
S1	#4	48	BNT.	15'-2"
② TWO DRILLED SHAFTS				
EPOXY COATED				
CV1	#9	20	STR.	47'-9"
NON-EPOXY COATED				
DS1	W20	1	SPIRAL	854'-7"

- ① MECHANICALLY SPLICED
- ② COST OF REINFORCING WILL BE INCLUDED IN UNIT PRICE OF DRILLED SHAFT
- ③ INCLUDES ONE 3'-8" LAP

BAR LIST - PIER NO. 2 (PHASE I)				
MARK	SIZE	NO.	FORM	LENGTH
EPOXY COATED				
B1	#5	5	BNT.	8'-1"
BH1	#8	9	BNT.	24'-9"
BH3	#8	9	STR.	23'-10"
BH5	#5	10	STR.	23'-10"
P1	#4	15	BNT.	7'-1"
P2	#4	18	BNT.	6'-7"
PH	#4	1	BNT.	16'-5"
S1	#4	64	BNT.	15'-2"
② TWO DRILLED SHAFTS				
EPOXY COATED				
CV2	#9	40	STR.	45'-9"
NON-EPOXY COATED				
DS2	W20	2	SPIRAL	816'-10"

- ① MECHANICALLY SPLICED
- ② COST OF REINFORCING WILL BE INCLUDED IN UNIT PRICE OF DRILLED SHAFT
- ③ INCLUDES ONE 3'-8" LAP

BAR LIST - PIER NO. 2 (PHASE II)				
MARK	SIZE	NO.	FORM	LENGTH
EPOXY COATED				
B1	#5	5	BNT.	8'-1"
BH2	#8	9	BNT.	16'-9"
BH4	#8	9	STR.	15'-10"
BH6	#5	10	STR.	15'-10"
P1	#4	10	BNT.	7'-1"
P2	#4	12	BNT.	6'-7"
S1	#4	48	BNT.	15'-2"
② TWO DRILLED SHAFTS				
EPOXY COATED				
CV2	#9	20	STR.	45'-9"
NON-EPOXY COATED				
DS2	W20	1	SPIRAL	816'-10"

- ① MECHANICALLY SPLICED
- ② COST OF REINFORCING WILL BE INCLUDED IN UNIT PRICE OF DRILLED SHAFT
- ③ INCLUDES ONE 3'-8" LAP

QUANTITIES - PIER NO. 1				
ITEM	UNIT	PHASE I	PHASE II	TOTAL
CLASS "A" CONCRETE	C.Y.	18.90	12.50	31.40
MECHANICAL SPLICE	EA.	28.00	0.00	28.00
EPOXY COATED REINFORCING STEEL	LB.	2,270.00	1,580.00	3,850.00
WATER REPELLANT (VISUALLY INSPECTED)	S.Y.	38.50	26.50	65.00
DRILLED SHAFT 48" DIAMETER	L.F.	88.00	44.00	132.00

QUANTITIES - PIER NO. 2				
ITEM	UNIT	PHASE I	PHASE II	TOTAL
CLASS "A" CONCRETE	C.Y.	18.90	12.50	31.40
MECHANICAL SPLICE	EA.	28.00	0.00	28.00
EPOXY COATED REINFORCING STEEL	LB.	2,270.00	1,580.00	3,850.00
WATER REPELLANT (VISUALLY INSPECTED)	S.Y.	38.50	26.50	65.00
DRILLED SHAFT 48" DIAMETER	L.F.	84.00	42.00	126.00

BRIDGE "B"		COMANCHE COUNTY		Design	MLC	07/16
U.S.-277 OVER SNAKE CREEK				Detail	VNT	07/16
<p style="text-align: center;"><b>DETAILS OF PIERS</b> (SHEET 2 OF 2)</p>				Check	DAH	04/17
				Squad	HARJO	
				Engr.	MOLLA-ESMAIL	
STATE OF OKLAHOMA		DEPARTMENT OF TRANSPORTATION				
JOB/PIECE NO. 27968(04)				SHEET NO. B017		